

SIDE-POWER

Thruster systems



NEW RADIO REMOTE CONTROL

The new Side-Power radio remote makes short-handed boating a lot easier, providing even more help from the boat's thruster system.

Side-Power has sold radio remotes built in industry standard enclosures for many years. Using this experience, a brand new radio transmitter has been designed, incorporating customer needs and wishes. The new Side-power radio remote is focused on user-friendliness by ensuring optimal ergonomics, ease of use and a high safety level. It retrofits very easily with Side-Power thruster systems and most windlasses.

A key feature is the clear boat shape in the design, eliminating the chance of misunderstanding directions when moving freely on your boat.

It incorporates the Side-Power unique safety features protecting against unintended activation of thrusters.

Illuminated buttons with soft lighting makes use of the remote at night convenient - and it comes with both a snap-in holder and a neck strap with snap-off safety.

The new shape of the remote and locking holder enables troublefree operation of the remote whilst in the holder - it doubles up as an additional fixed control station.

The new Radio remote control is waterproof, has large rubber buttons and the defined ridges between the buttons makes it easy to use without looking. Rubber pads on the back prevents it from sliding around, leaving scratches on polished surfaces.



**The new Side-Power Radio Remote Control
- making shorthanded boating a pleasure...**

Full mobility onboard

A radio remote control makes your thruster system even more helpful around the docks.

Providing full simultaneous control of a bow and a stern thruster or a bow thruster and a windlass, making shorthanded boating a new experience.



Bow thruster & windlass
Kit part code: 8985



Bow & stern thruster
Kit part code: 8980

SIDE-POWER

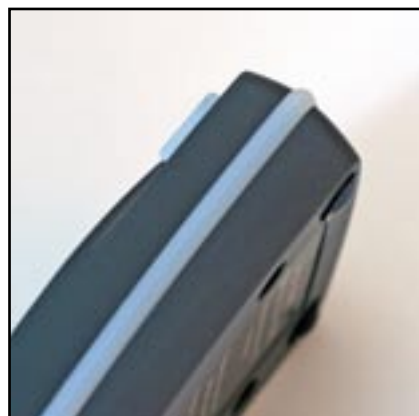
Thruster systems



Product Specifications: RADIO REMOTE CONTROL



Holder and neck strap included



Anti skid pads / water proof sealing



New and improved holder

New Features:

- Illuminated buttons when activated.
- Boat shaped design feature and button layout - makes it easy to understand thruster operation when not at the normal maneuvering position
- New improved holder - enables the radio remote control to be used also when placed in the holder, much like a fixed control panel
- Neck strap with snap-off safety included
- Ergonomic shape - fits well in your hand, even if you turn it around
- Waterproof (IP65)
- Friction rubber pads on reverse side

Technical:

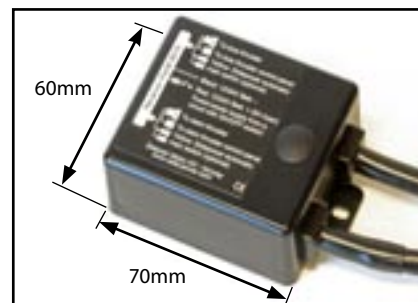
- Up to 4 remotes per receiver. The kit is factory set, more or new remotes can be added/programmed by the user.
- Frequency: 433.92MHz
- Max range: 50-80 meters
- Full multiplexing allows full simultaneous use of bow and stern thruster or bow thruster and windlass
- The receiver is very compact, has a built in antenna and comes ready wired for Side-Power "plug and go" wiring. Requires separate power supply (9-28V)
- Remote uses standard sized batteries with easy availability
- Connection to Side-Power thruster systems by "plug and go" wiring

Safety Features:

- Unique transmitter codes, secures against activation from other than programmed Side-Power remotes
- The receiver is in standby mode unless activated by the programmed Side-Power remote
- When pushing the off button, the remote sends an off signal to the receiver, or if you forget, the remote will automatically de-activate 3 min. after last use
- Even without an off signal, the receiver will go into standby mode 4 minutes after last use



Illuminated buttons/Boat shaped layout



Compact receiver, plug & go wiring

This document may contain typographical errors, to which Sleipner Motor assumes no responsibility. Sleipner Motor reserves the right to make product changes without prior notice.



Sleipner Motor AS
P.O. Box 519
N-1612 Fredrikstad
Norway

Tel: +47 69 30 00 60
Fax: +47 69 30 00 70

www.side-power.com
sidepower@sleipner.no

